

# The Domino A300

*For top coding performance in harsh environments*



## Key Benefits:

### Reliability Comes as Standard

- Consistent high quality codes, requiring minimal operator intervention
- Reliable start-up, even after uncontrolled shut down

### Unique Self-Cleaning Ink System

- Large internal reservoir and nozzle seal ensures truly automatic print head cleaning

### SureStart

- On-button controls the complete start-up and shut down process

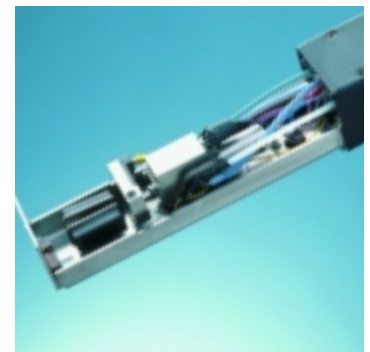
## Main Features:

- Rugged Cabinet Design  
316 grade stainless steel, rated IP65  
Protection from dust and water
- Flexible Applications  
Up to 4 lines in a variety of print formats
- Domino Inks  
Range of Advanced, Specialist and Custom inks for all application requirements



## Additional Options:

- Pinpoint™  
High speed, high definition micro printing, as small as 0.8mm in height, without compromising quality or clarity
- FreeForm™  
High definition free-flowing, curved characters, giving codes a "close-up" quality
- Opaque  
In industries where dark surfaces must be coded, the A-Series Opaque produces high visibility, high quality codes even on small areas
- XS  
Coding up to 30% faster than regular A300 coding, the XS retains reliability whilst meeting the demands of high-speed industries
- SE  
Category 1 IP66 protection in the toughest of environments



A-Series print head



Unique Domino ink system

## Technical Specification

### Control Unit

**Control Panel:** Membrane touch button  
**Cabinet:** Stainless Steel (316) rated to IP55  
 (BS EN 60529:1992) IP65 (BS 5490:1977)

**Cabinet dimensions:** 245mm x 475mm x 725mm (9.6" x 18.7" x 28.5")  
**Weight:** 36kg (79lbs)

### Character Control

- Auto repeat
- Auto invert/reverse
- User defined clock format
- Sequential/batch numbering
- Inverse reverse and bold characters
- Character width and height adjustment
- Print delay
- Product counter
- Barcodes
- Message repeat

### Data Input Options

- Serial RS232
- Ethernet, RJ45 Connector
- Rate: 110-38.4k Baud, software configurable

### Ink System

**Viscosity control:** Automatic  
**Ink bleed control:** Automatic on start up  
**Ink and make-up refill:** 825ml (.87qt) cartridge automatically metered  
**Peltier:** Standard

### Print head

**Dimensions:** 240mm x 41mm x 47mm (9.45" x 1.61" x 1.85")  
**Conduit length:** 3m (11'8) or 6m (23'6)  
**Positive air:** Optional internal supply.  
**Airdryer:** Internal compressor or factory air option

### Environment

**Temperature range:** 5 – 45°C (40 – 112°F) operating  
**Humidity:** 10 – 90% (non-condensing)  
**Electrical requirements:** Single phase, fully auto-ranging  
 90 – 132V/180 – 264V, 50/60Hz 200VA

### Standard Connections

**Product detector:** 12V 100mA for photocell or proximity detector. IP68 6 way socket  
**Shaft encoder input:** Open collector or TTL encoder  
 12V via IP68 6 way socket

### Options

**Alarm beacon connector:** IP68 7 way socket  
**Auxiliary alarms connector:** IP68 9 way plug  
**User port connector:** IP68 25 way socket

### Accessories

Full range of photocells, stands and bracketry

#### Australia

Domino (Australia) Pty. Ltd.  
 Unit 12  
 6 Gladstone Road  
 Castle Hill  
 Sydney  
 NSW 2154  
 Tel: + 61 2 9894 7833

#### Canada

Domino Printing  
 Solutions Inc.  
 2751 Coventry Road  
 Oakville  
 Ontario  
 L6H 5V9  
 Tel: + 1 800 387 7972

#### India

Domino Printech India  
 Private Limited  
 167, Udyog Vihar Phase I,  
 H.S.I.D.C. Gurgaon -  
 122016 Haryana  
 Tel: + 91 124 500 7406

#### United Arab Emirates

Domino UK Ltd (Dubai)  
 PO Box 16984  
 Jebel Ali Dubai  
 Tel: + 971 4 88 35003

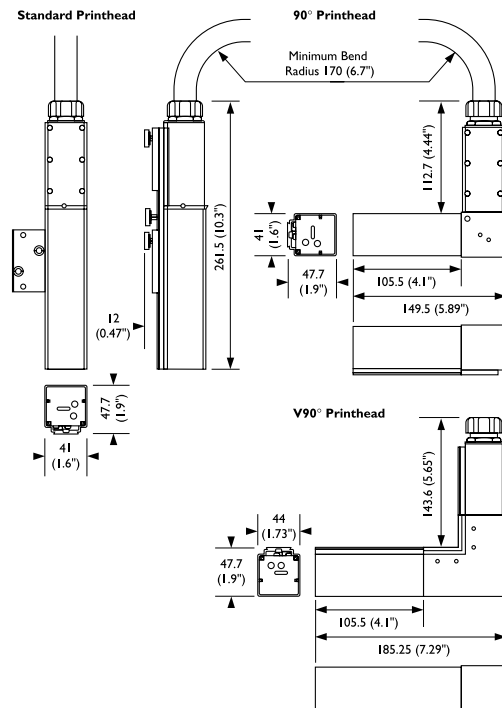
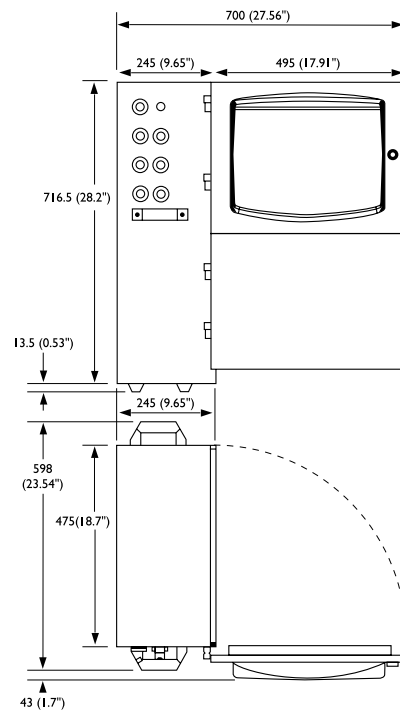
#### United Kingdom

Domino UK Ltd  
 Bar Hill  
 Cambridge  
 CB3 8TU  
 Tel: + 44 1954 782 551

#### United States of America

Domino Amjet, Inc.  
 1290 Lakeside Drive  
 Gurnee  
 Illinois 60031  
 Tel: + 1 800 486 7351

## Dimensions Show Door Open



[www.domino-printing.com](http://www.domino-printing.com)

